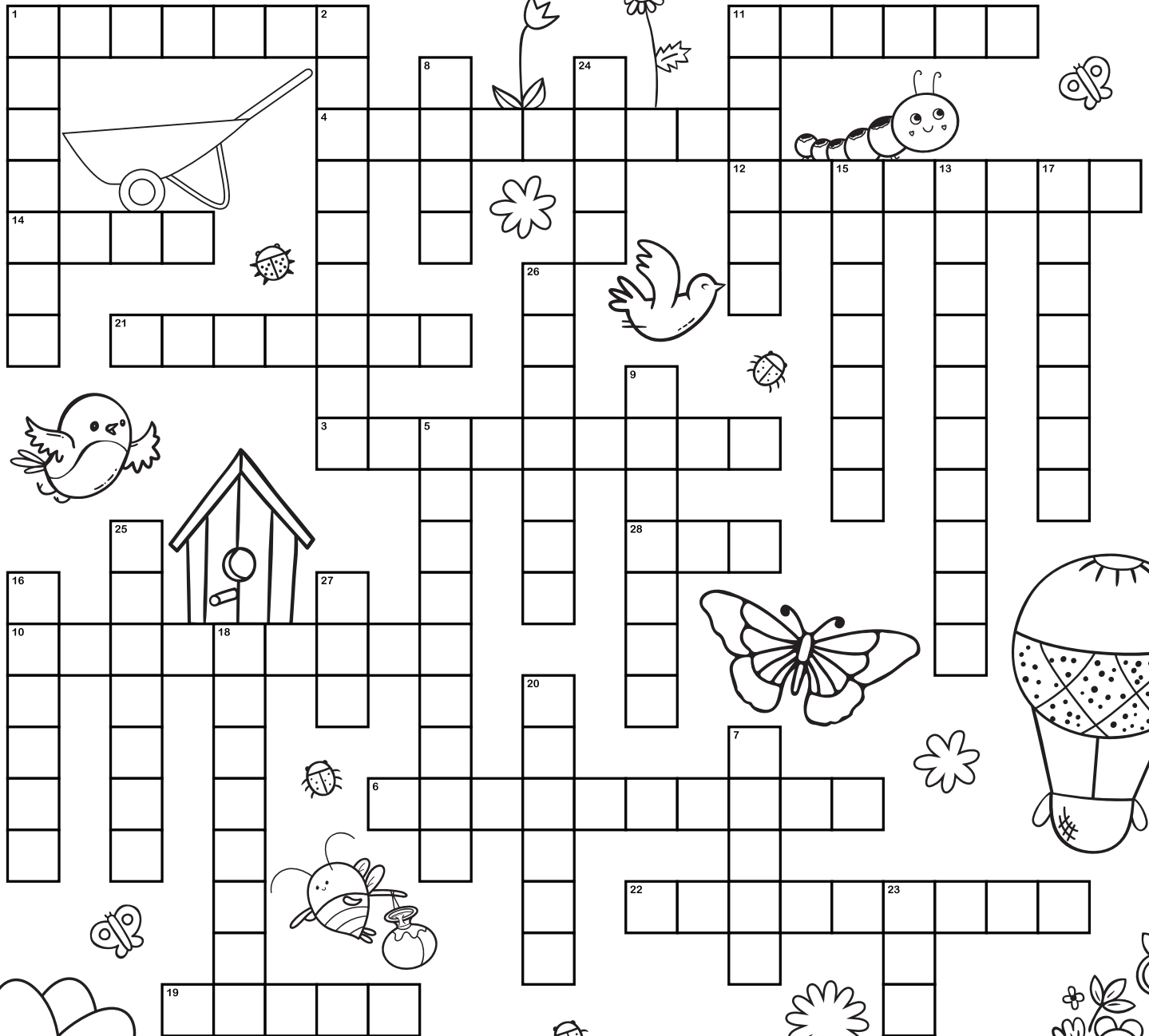


SPRING CROSSWORD

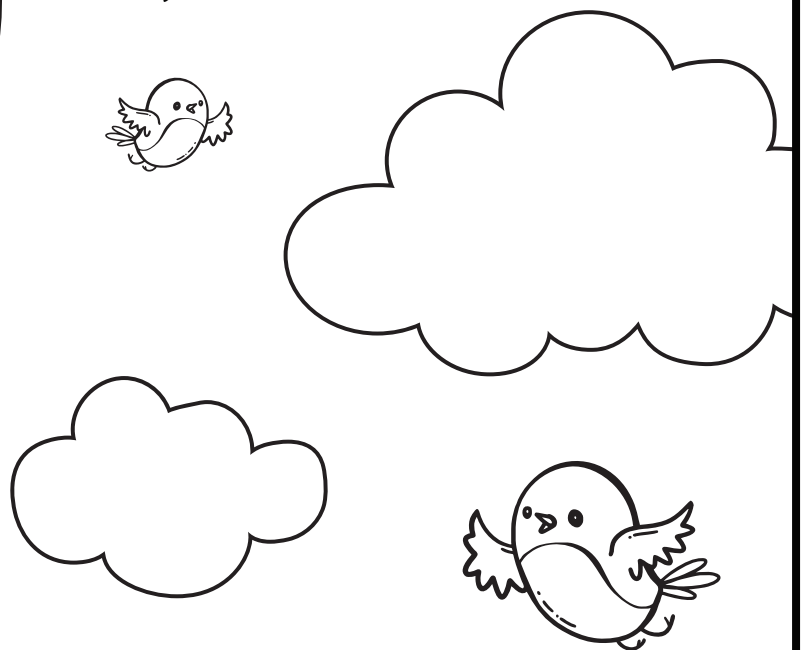
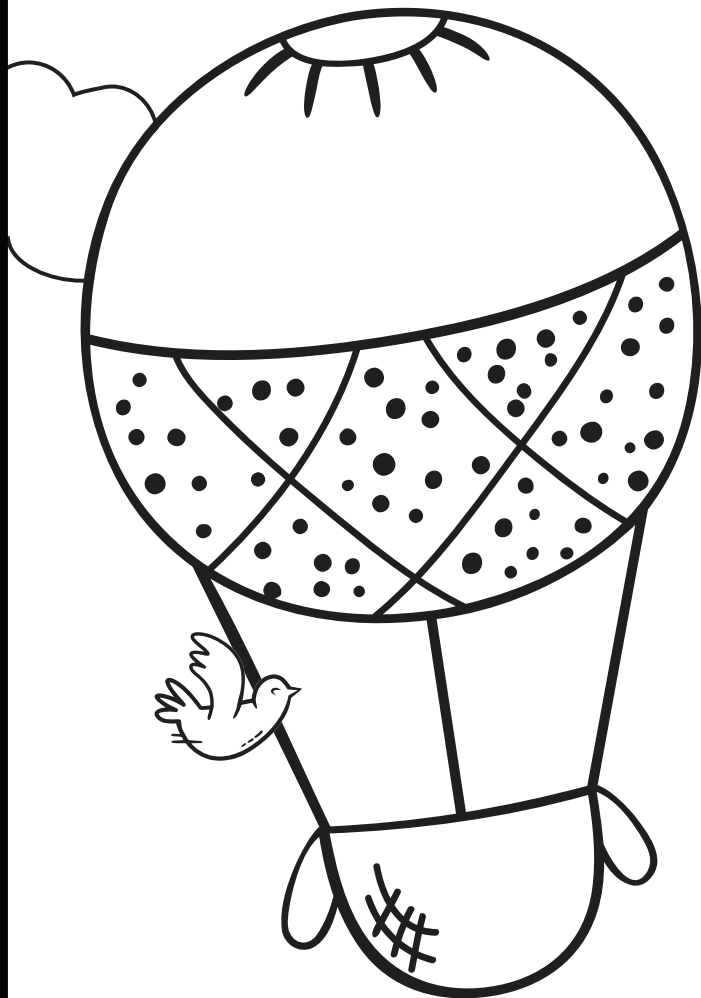


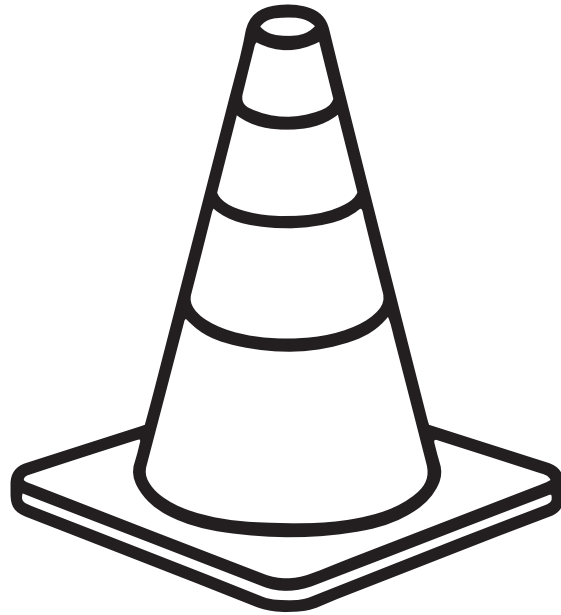
ACROSS

1. Ice and snow turning into water as temperatures rise.
3. When a seed begins to grow and develop.
4. Water collected from rainfall, often used for plants.
6. A structure with glass walls used for growing plants.
10. Small droplets of water falling from the sky.
11. A brief, light rain that refreshes the air.
12. The sky covered with gray clouds.
14. Slightly wet, often from light rain or mist.
19. Cool and fresh, like a spring morning
21. Showing signs of new growth, like a small flower bud.
22. Cascading water flowing from a height.
28. The month known for blooming flowers and rainy days.

DOWN

1. A loud sound in the sky before a storm.
2. The practice of growing and caring for plants.
5. A powerful burst of rain and wind.
7. A strong wind that moves through the trees.
8. A fine mist of water that makes mornings feel cool.
9. A colorful arc that appears after rain
11. A young plant beginning to grow from a seed.
13. A sudden, intense downpour of rain.
15. The moment when day and night are of equal length.
16. A gentle wind that cools a warm day
17. The process of planting new seeds for growth.
18. Heavy rainfall that lasts for a short time.
20. A soft wind that moves leaves and flowers.
23. Weather condition when the air is thick with moisture.
24. A soft haze in the air, often in the early morning.
25. Light rain that falls softly and steadily
26. Bouncy, energetic, and full of life.
27. Thick, low-hanging mist that limits visibility.





WARNING

Solution Zone!

Peek only if you're
ready to see the
answers!

SPRING CROSSWORD

The crossword puzzle grid contains the following words:

- 1 Across: THAWING
- 2 Down: G
- 3 Across: GERMINEATE
- 4 Across: RAINWATER
- 5 Down: AN
- 6 Across: GREENHOUSE
- 7 Down: GS
- 8 Down: M
- 9 Down: R
- 10 Across: RAINDROPS
- 11 Across: SHOWER
- 12 Across: OVERCAST
- 13 Down: URBAN
- 14 Across: DEWY
- 15 Down: QUELLED
- 16 Down: BR
- 17 Down: DING
- 18 Down: DRIPS
- 19 Across: CRISP
- 20 Down: BORE
- 21 Across: BUDDING
- 22 Across: WATERY
- 23 Down: FOGGY
- 24 Down: H
- 25 Down: DR
- 26 Down: SP
- 27 Down: F
- 28 Down: BAN